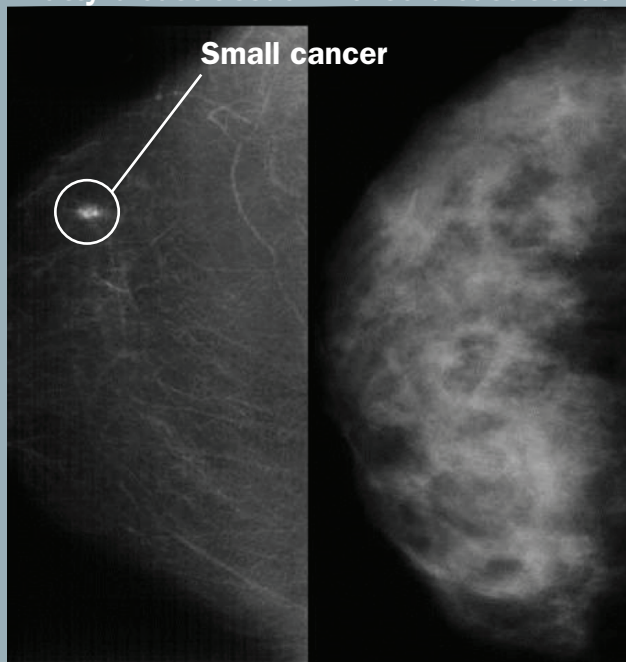


# Why 3D Mammography?

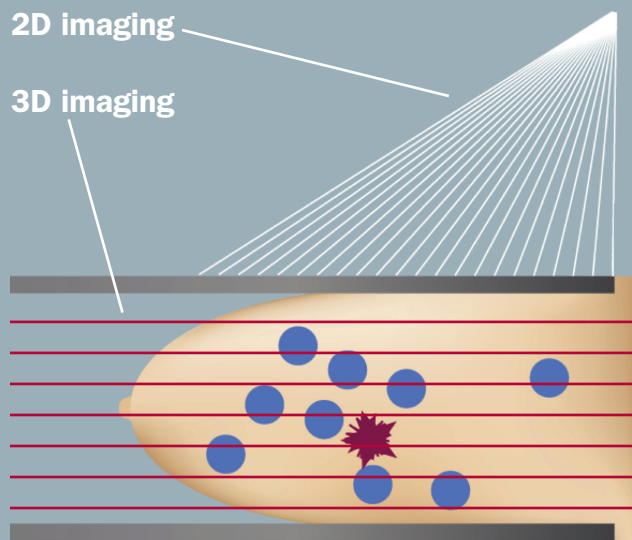
- 3D improves breast cancer detection by up to 40%.
- 3D reduces the chance of call-backs for follow-up imaging by up to 40%.
- 3D is particularly beneficial for women with dense breasts or with a personal or family history of breast cancer.

Cancer and dense tissue both show as “white” on X-ray, making cancer harder to see in dense breast tissue.

Fatty breast tissue    Dense breast tissue



3D minimizes the effect of breast tissue overlap. It obtains multiple, thin images.

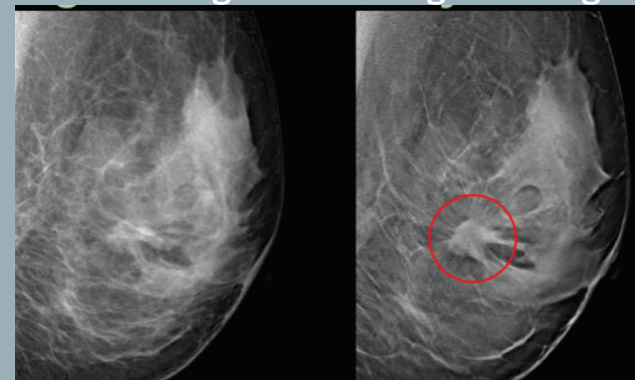


★ = cancer  
● = breast tissue can hide cancers

3D shows greater detail.

2D image

Single 3D image



St. Luke's  
WOMEN'S  
CENTER