

Jewish Community Center's

# Marilyn Fox Building

16801 Baxter Road  
Chesterfield, MO 63005

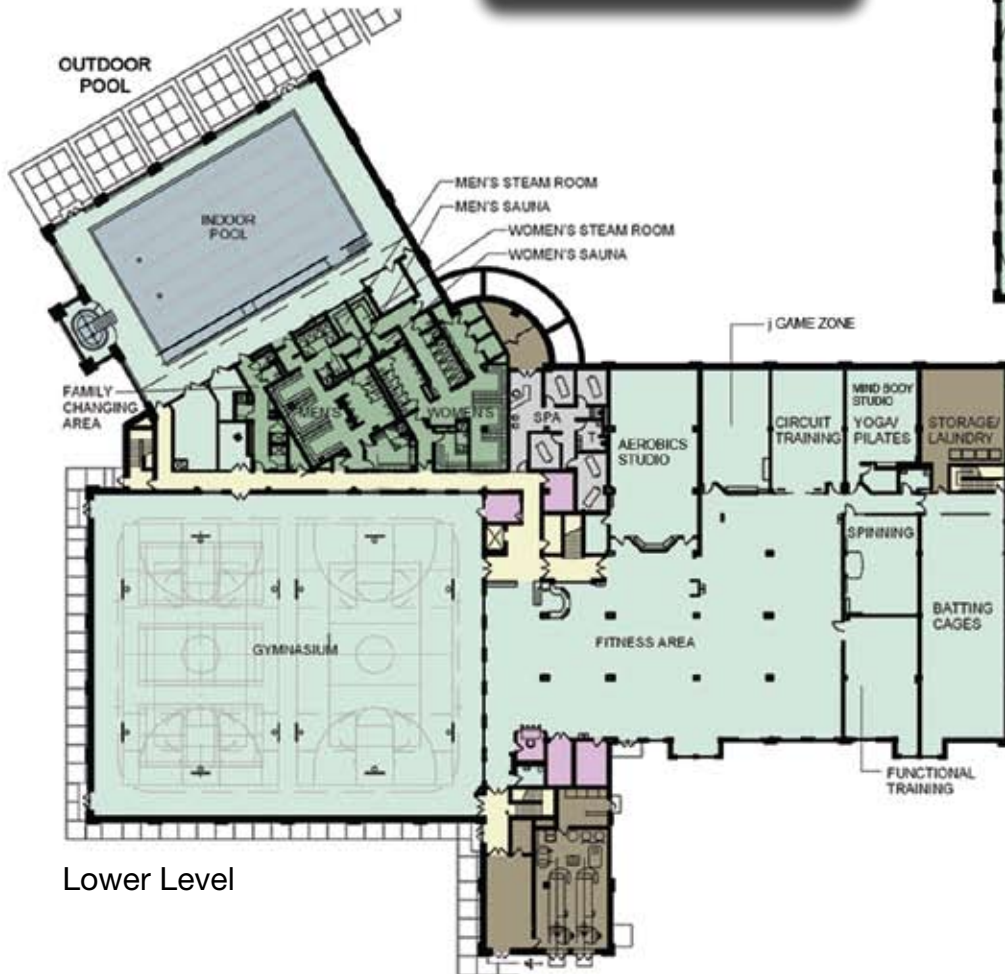
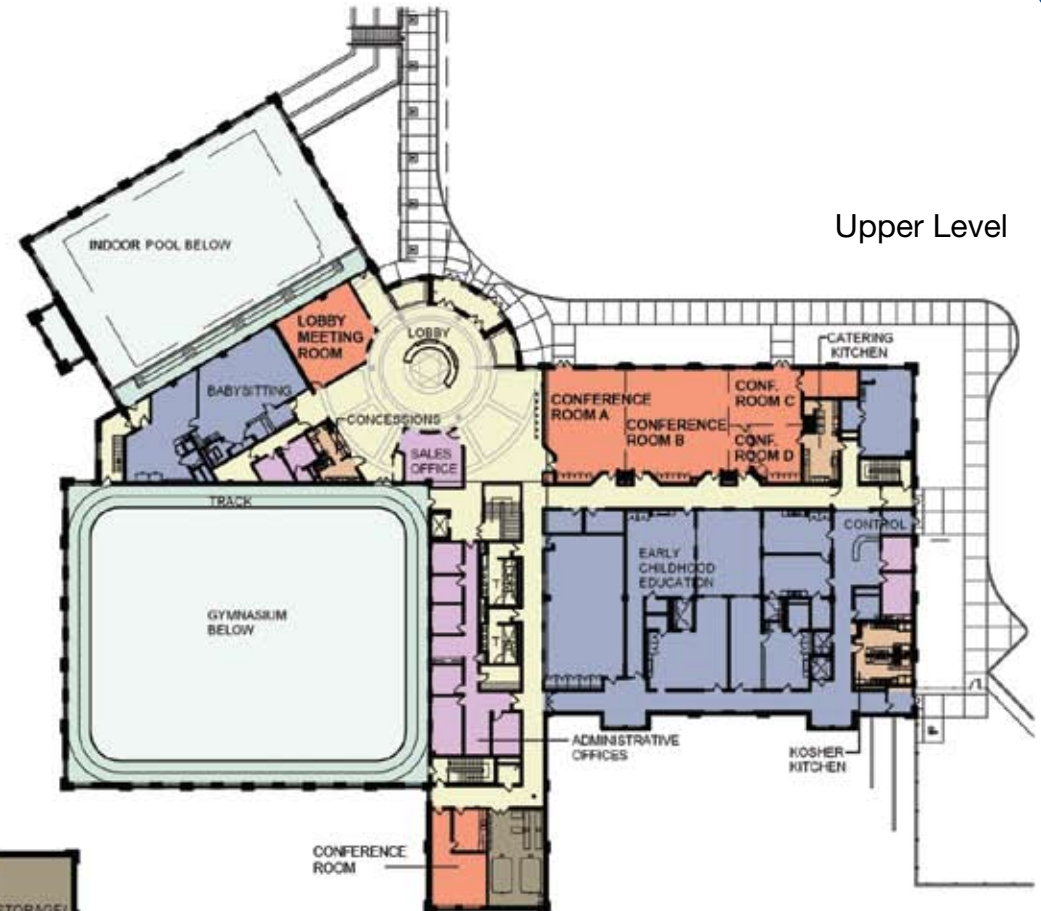
[jccstl.org](http://jccstl.org)

Randi Poscover

Facilities Manager

314-442-3427

[rposcover@jccstl.org](mailto:rposcover@jccstl.org)



JEWISH COMMUNITY CENTER



# Marilyn Fox Building

Chesterfield, Missouri

## Conference and Banquet / Fitness and Recreation Facilities

Meeting Space	Dimensions	Ceiling Height	Square Feet	Audience	U-Shape	Class	Hollow Square	Club	Exhibits 8'x10'	Exhibits 10'x10'	Comments
Conference Center Total	40 X 89'	10'/ 9'	3560	380	-	198	-	280	21	17	Available for formal events-weddings, bar/bat mitzvahs, lock-ins, large parties. Business meetings, seminars, and conferences. Catering kitchen capabilities. Audio-visual equipment available. Wi-Fi
Conference Room A	40 X 27'	10'/ 9'	1080	115	30	60	25	80	-	-	
Conference Room B	40 x 36'	10'/ 9'	1440	160	40	80	40	120	-	-	
Conference Room C	27 x 20'	10'/ 9'	540	60	20	30	14	40	-	-	
Conference Room D	25 x 20'	10'/ 9'	500	55	20	25	15	40	-	-	
Grand Lobby	66 x 84'	20'	5544	-	-	-	-	-	30	20	Café and cocktail tables for seating. Overhead sound with CD music capabilities. Beautiful vaulted sky light setting! Circular and tiered reception desk is great for serving beverages and food! Wi-Fi
Lobby A	33 x 42'	10'	1386	-	-	-	-	-	-	-	
Lobby B	33 x 42'	10'	1386	-	-	-	-	-	-	-	
Lobby Meeting Room	28 X 26'	9'	728	75	30	40	16	50	-	-	Microphone and overhead sound/ CD music capabilities. Wi-Fi
Committee Room	18.5 X 19'	9'	352	30	20	20	10	25	-	-	
									-	-	
<b>Fitness and Recreation</b>									-	-	
Aerobics Studio	28 X 56'	9'	1568	-	-	-	-	-	-	-	
Mind/Body Studio	33 X 22'	10'	726	-	-	-	-	-	-	-	
J Game Zone	40 X 22'	10'	880	-	-	-	-	-	-	-	Kid's interactive work out zone to include game bikes, dance pads, Wi-Fi, and educational computers.
Gymnasium Total	104 X 125'	30' / 13'	13000	-	-	-	-	1080	80	65	Two regulation basketball courts with 1/4 court options. 6 regulation badminton courts. Two regulation volleyball courts Suitable for Trivia Nights, large parties and lock-ins. Overhead sound and microphone capabilities.
1/4 Ct. Gymnasium A	52 X 62.5'	30' / 13'	3250	-	-	-	-	-	-	-	
1/4 Ct. Gymnasium B	52 X 62.5'	30' / 13'	3250	-	-	-	-	-	-	-	
1/4 Ct. Gymnasium C	52 X 62.5'	30' / 13'	3250	-	-	-	-	-	-	-	
1/4 Ct. Gymnasium D	52 X 62.5'	30' / 13'	3250	-	-	-	-	-	-	-	
Outdoor Recreation Pool Complex	80 X 100'	-	8000	-	-	-	-	-	-	-	Lap lane area includes 3 lap lanes 25 yds.ea. Recreation side includes aqua climbing wall, volleyball and basketball capabilities. Open tube and closed tube water slide area. Vero depth area includes play structure with slide, baby bungee, and tire swing.
Indoor Pool	66 X 98'	28'	6468	-	-	-	-	-	-	-	25 yards. 6 lanes
Ball Field	General softball and baseball field	-	-	-	-	-	-	-	-	-	Non-lighted field
Soccer Field	Standard Soccer Field with goals	-	-	-	-	-	-	-	-	-	Non-lighted field